

A wide-angle, slightly elevated photograph of a modern school campus. The main building is a long, two-story structure with a light-colored facade and a series of windows. In the foreground, there is a paved walkway with several people walking. To the right, there is a parking lot with a few cars. The sky is blue with scattered white clouds. The overall scene is bright and clear.

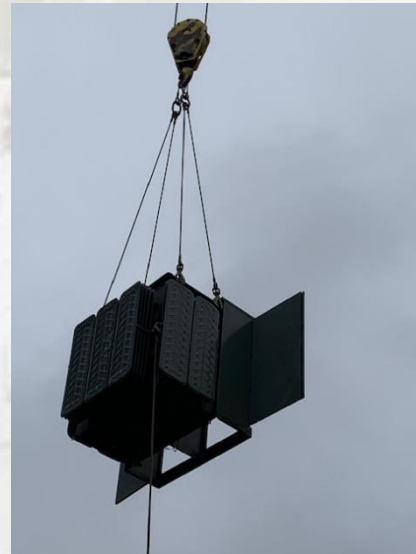
# *Woodland Public Schools*

Facilities and Safety Report  
October 2020

# FACILITIES REPORT

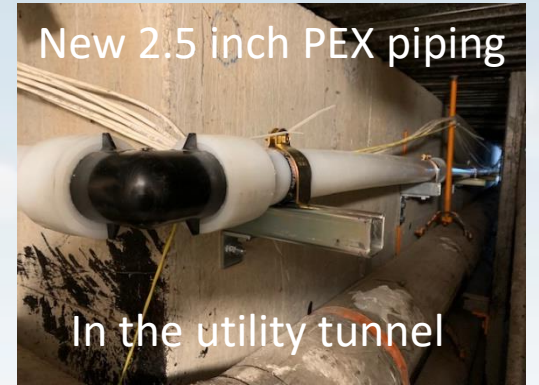
## Power Failure North Fork

The main power transformer to North Fork Elementary failed November 10<sup>th</sup>, forcing the school to go to full remote learning for the day. Cowlitz PUD was able to quickly source a new transformer in their yard and brought it to the school. The jib crane on the PUD truck was unable to lift the transformer off the trailer, due to the weight. The new transformer weighs just over 9000 pounds. We scheduled in a Ness/Campbell crane for Wednesday and completed the swap. We powered the school back up around noon. Unfortunately we found some damaged HVAC equipment as a result of the failed transformer “single phasing”, but we were able to get one of the HVAC system pumps operating. It is not unusual to see damage like this with this type of failure. Commercial transformer failures like this are very rare and we are assigning the failure to **2020!**



# FACILITIES REPORT

**Water Piping Project** We are finished with the section on piping that goes from the gym mezzanine to the utility trench near the Middle School Office. The majority of the piping work that will be done in the trench and mezzanine. The balance of the work will be a line bore from the water meter on Park Street to the utility tunnel.

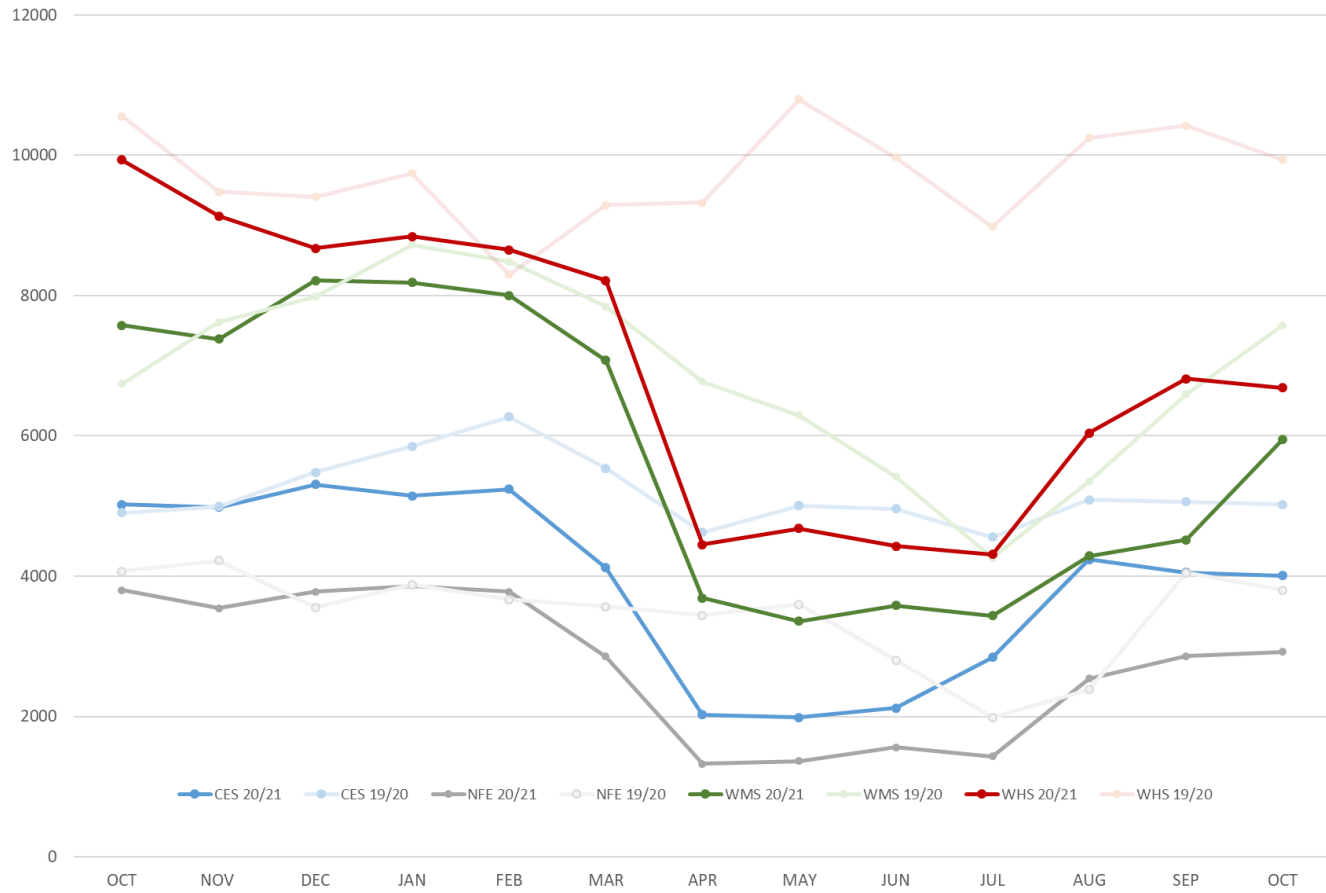


**Team Portable** After an exhausting month of negotiating, we were able to strike a very good deal with Modern Building Systems for a used portable that will provide expansion space for TEAM High School. Pricing was reduced by \$10,200, which puts the cost squarely within the grant dollars. In the next few weeks, we will be breaking ground to the west side of the existing portable and prepping the site. This will include grading and setting gravel in for the building foundation. At this point, I'm hoping to have the building occupancy permits by the beginning of the year.

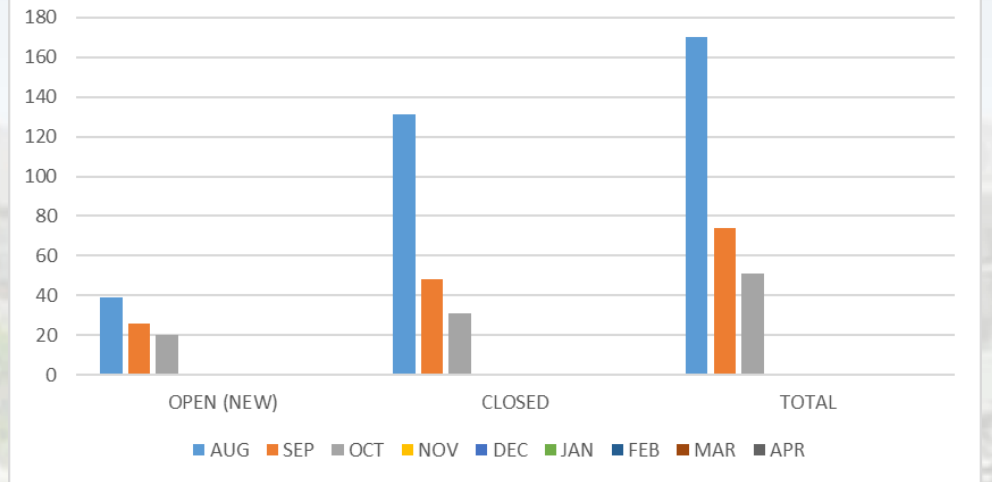
**Bus Turnaround** Bus traffic at Columbia Elementary has always been a problem. Cars zooming past buses while they are loading students, buses have to cross pedestrian crosswalk, and parent pick up traffic to leave the school. To remedy this, we will be adding a bus turnaround at the current loading zone that will allow the buses to go back the way they came and not impact the parking lot of Columbia Elementary at all. Once this is established, I will approach the City to see if we can gate off the gravel road completely. This will also end our younger drivers from "drifting" on the gravel corner!

# FACILITY CHARTS – POWER COST AND WORK ORDER STATUS

ELECTRICAL COST 19/20 & 20/21 SCHOOL YEARS



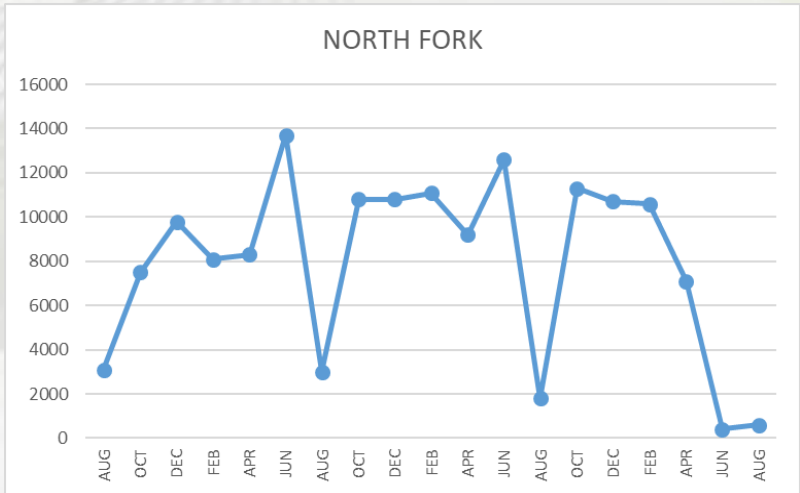
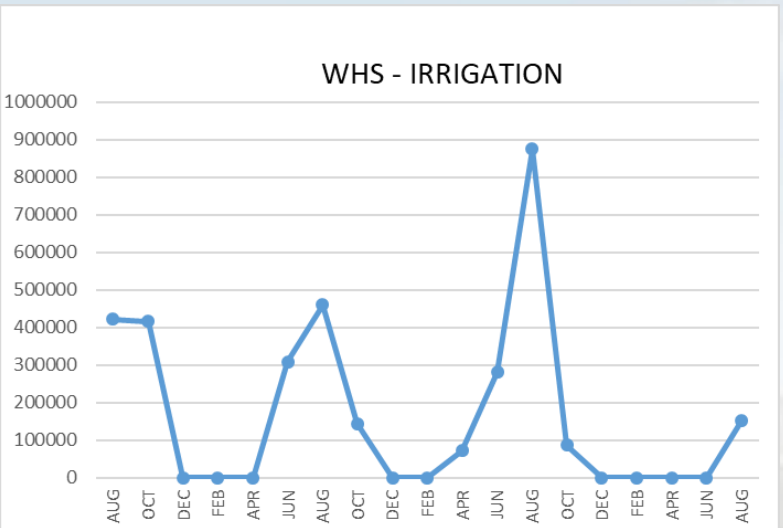
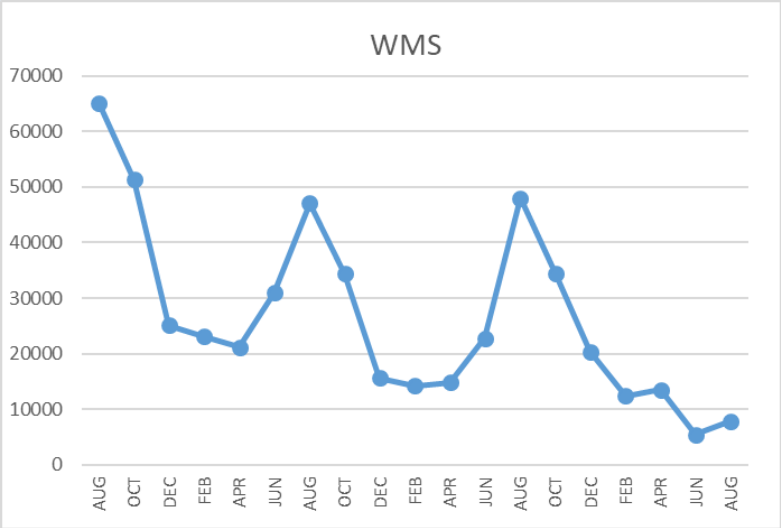
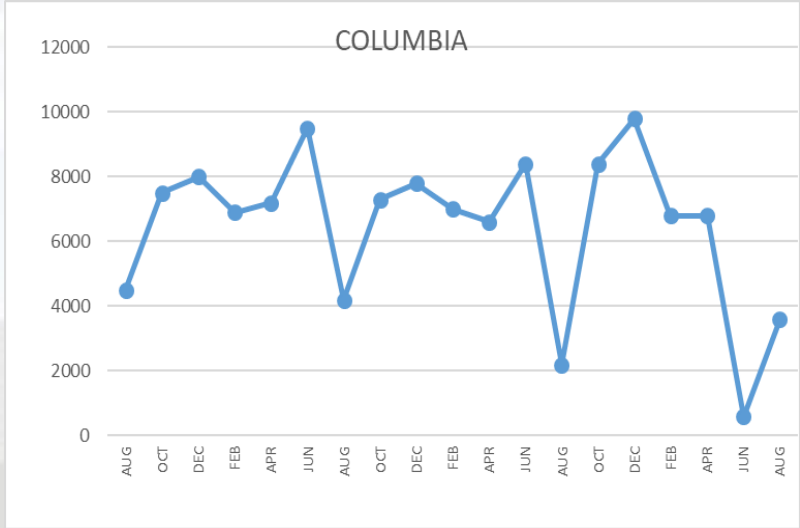
Corrective Maintenance WO Status 20/21



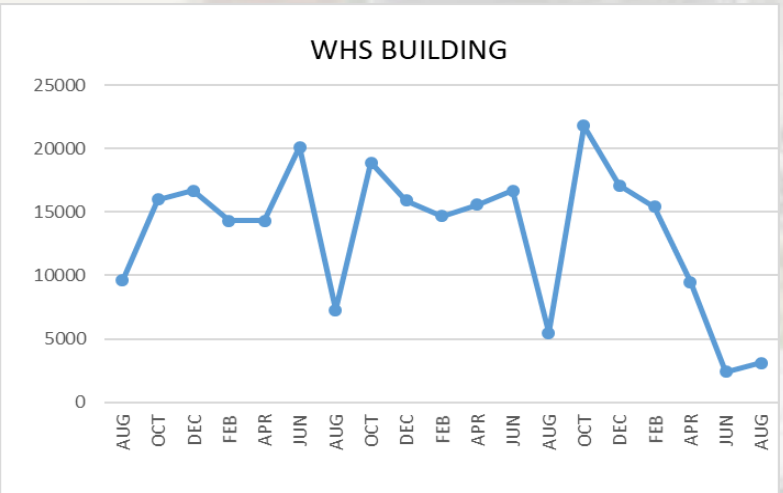
# FACILITY CHARTS WATER USAGE

WHS, NFES, WMS, CES

Note  
Water charts are updated every two months.



*The WMS chart includes the following 7 meters: 755 Park high and low flow, BO and TEAM High, PIT house, bus barn, athletic field and DO. All of these meters are totaled on the WMS graph, but each data point is recorded separately to aid in identifying leaks.*



# Safety Summary

## Staff Accidents/Incidents

One staff accident- numbing of fingers, thought to be associated with a carpal tunnel type injury.

## Student Accidents/Injuries

No student accidents or incidents recorded.

